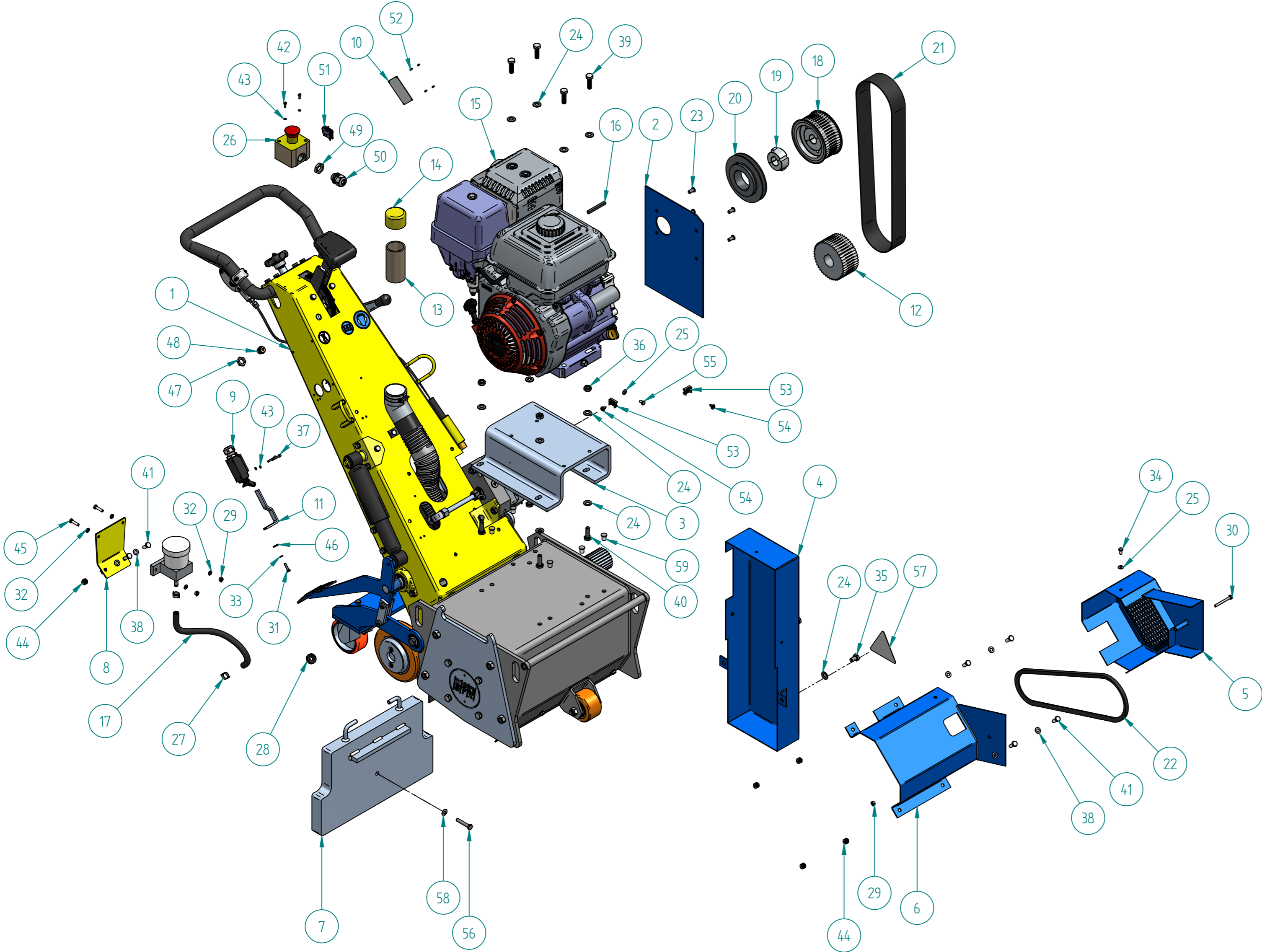


TOLERANCES acc. to ISO / TOLERANSEN ent. ISO
 Applicable where no tolerance is indicated.
 Gültig für Toleranzen bei direkt abgelesenen
 For machining / Für Bearbeitung ISO 2768-mk
 For welding / Für Schweissen SS-EN ISO 13920-BF
 Surface finish acc. to ISO 15622 Machine surfaces
 Oberflächenfinish ISO 1302. Für bearbeitete Flächen

Item	Artikelnummer	Document Number	Title	Quantity	Item	Artikelnummer	Document Number	Title	Quantity
63	900018		LABEL SWISS DESIGN	1	1	707230	668.00.00d	VA-30SH BASIC DEVICE	1
64	110890		SCOTCHLOK 3M	1	2	707509	668.28.02a	ENGINE PROTECTION PLATE	1
65	111183		STICKER "WARNING HOT SURFACE"	1	3	707520	668.28.03a	METAL SHEET	1
66	111181		STICKER 50MM	1	4	707521	668.26.13a	BELT GUARD (DIESEL)	1
67	703556		STICKER	1	5	707225	668.26.02b	FAN WHEEL PROTECTION DIESEL	1
					6	707224	668.26.01a	PUMP PROTECTION DIESEL	1
					7	707222	668.21.06d	ADDITIONAL WEIGHT PLATE FOR VA	1
					8	707203	658.01.61	CONTAINER HOLDER	1
					9	706365	665.32.00	POSITION SWITCH	1
					10	703559	788.42.31c	TYPE PLATE	1
					11	703037	665.09.08a	BEVELLED PROFIL FOR SWITCH	1
					12	702631	655.01.21	TOOTHED PULLEY	1
					13	702627	658.01.42	SUCTION TUBE	1
					14	113410	658.01.46	PROTECTION PIN	1
					15	707557	668.28.01	GASOLINE ENGINE HONDA USA	1
					16	114822	792.75.92	WEDGE	1
					17	708723	668.02.20	PRESSURE HOSE MAAG LW 8X15	0.4
					18	702754	655.22.01	TOOTHED WHEEL RPP 48-8-50	1
					19	114809	668.28.08	COLLET TAPER-LOCK	1
					20	114807	668.28.06	V-BELT DRIVE DISC SPZ D132	1
					21	112859	668.28.11	TOOTHED BELT 1200-8MGT-50	1
					22	114810	668.28.09	V-BELT SPZ1012	1
					23	114821	BN_1206_M8x16	CYL. SCREW, HEX. INT. 10.9	4
					24	113919	BN_13292_M10	SAFETY WASHER	14
					25	113917	BN_13292_M6	RIP-LOCK LOCKING WASHER	2
					26	110942	79180.04	CASING EMERGENCY STOP	1
					27	109397	792.64.58	CLAMP	2
					28	109046	79146.54	CABLE RETAINER	1
					29	108693	BN_161_M6	SAFETY NUT	3
					30	107925	BN_56_M6x55	HEXAGON HEAD SCREW	1
					31	107683	BN_56_M5x20	HEXAGON HEAD SCREW	1
					32	107358	BN_721_M6	WASHER	4
					33	104727	BN_762_M5	LOCK WASHER M5	1
					34	104197	BN_56_M6x12	HEXAGON HEAD SCREW	1
					35	102289	BN_56_M10x16	HEXAGON HEAD SCREW	2
					36	102287	BN_117_M10	HEXAGONAL NUT	4
					37	102271	BN_3_M4x25	ALLEN SCREW	2
					38	101670	BN_715_M8	WASHER	6
					39	101609	BN_56_M10x35	HEXAGON HEAD SCREW M10x35, DIN 933,	4
					40	101608	BN_56_M10x30	HEXAGONAL SCREW	4
					41	101600	BN_56_M8x20	HEXAGONAL SCREW	6
					42	101590	BN_3_M4x10	ALLEN SCREW	2
					43	100615	BN_792_M4	SAFETY WASHER	4
					44	100263	BN_161_M8	SAFETY NUT	6
					45	103768	BN_56_M6x25	HEXAGON HEAD SCREW	2
					46	108573	BN_733_M5	WASHER	1
					47	115137		COUNTER NUT M16	1
					48	115136		SELF-SEALING GROMMET	1
					49	114880		COUNTER NUT M20 PLASTICS	1
					50	114813		SCREWED CABLE GLAND M20 PLAST	1
					51	111749		CONTACT TO EMERGENCY SHUTDOWN	1
					52	108214		POP RIVET TAP/D320	4
					53	116783	BN 20275 TM3S25-C	SOLE ASSEMBLE T+E	2
					54	900049	BN 14064 6.3x13	PAN HEAD TAPPING SCREW	2
					55	107919	BN_56_M6x10	HEXAGONAL SCREW	1
					56	103771	BN 56 M8x45	HEXAGON HEAD SCREW	1
					57	115650	665.00.05	STICKER "WARNING CUTTER SHAFT"	1
					58	113918	BN_13292_M8	RIP-LOCK LOCKING WASHER	1
					59	108338	792.64.87	SPECIAL PIN TL-2-207	6
					60	707321	668.42.01	STICKER-VA-30 SH	1
					61	900000		CABLE TIE 280X35, NATURAL	5
					62	900074		MOLYKOTE BR2 PLUS	0.005



THE INFORMATION CONTAINED IN THIS DRAWING IS THE SOLE PROPERTY OF
 VON ARX. EOOD. REPRODUCTION IN PART OR WHOLE WITHOUT
 THE WRITTEN PERMISSION OF VON ARX. EOOD. IS PROHIBITED.

Material		Dimension	
Drawn By GS	Date 29/08/2019	Approved Date 03.12.2019	Approved By MS
Units : mm		SIZE A2	
		Description VA 30 SH WITH GASOLINE ENGINE	Article Number 707554
		TWIG NO 668.28.00b	
Part/Assembly File 6682800.asm		sheet of 1 1	
		Rev.	b